



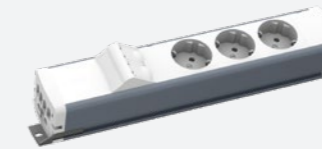
Simon | 480

CONNECTIVITY
FOR WORKPLACES

simon

Assembled and wired
solutions for office
furniture

HIDDEN SOLUTIONS



481 ESSENTIAL
Robust and practical workplace solutions which are not visible to the user.



482 DEPTH
More space for wiring distribution and housing for larger data & multimedia connectors in workplace installations not seen by the user.

VISIBLE SOLUTIONS



483 ROUND
Minimum space solution for shared workplaces in auxiliary furniture.



484 OVERDESK
Solution with a high aesthetic component where it is necessary to have visible access to power and data connections.

SOLUTIONS FOR MEETING ROOMS



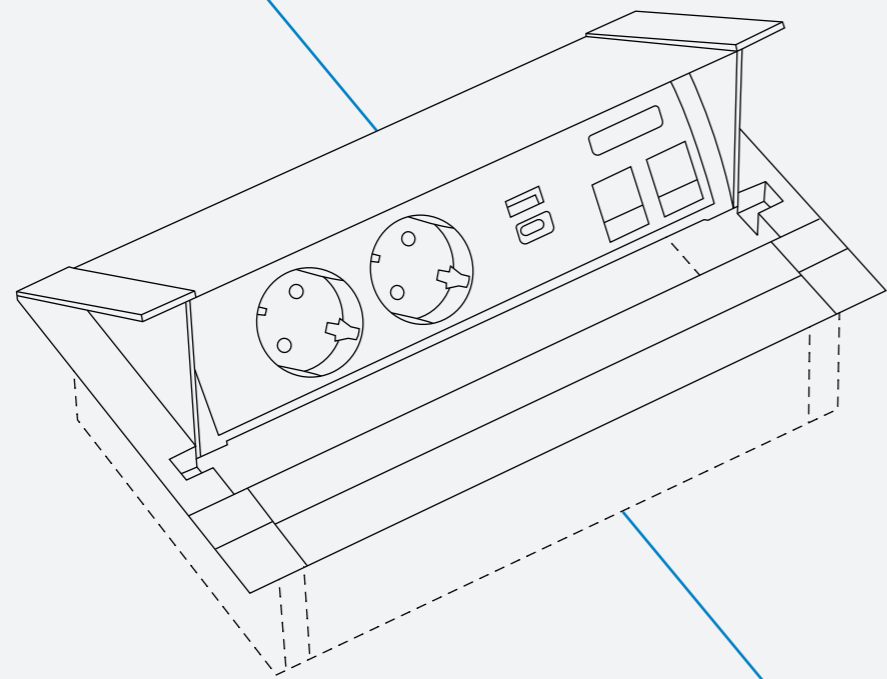
485 INDESK
Solution where access to connections is frequent or where access is needed from both sides of the table.



486 SPINNER
Solution that hides power outlets, data and multimedia connectors at the spin of a button.



487 COVER
The elegance of the connections in the table that are only accessible and visible when needed.



ASSEMBLED AND WIRED: SPEED AND SAFETY



Assembled and wired

All solutions in the 480 range are supplied assembled and wired making installation as simple as placing it in position, fixing it and powering it.



Guarantee

Simon guarantees that each solution has been verified in the factory before supplying, avoiding having to review the connections.



Customisation

The solutions for workplaces in furniture are supplied completely tailored to the need of the project: number and type of socket-outlets, data plates and rj45 connectors, multimedia connectors and cable access.

100% COMPATIBLE WITH SIMON FLEXIBLE CONNECTION SYSTEM



The distribution boxes are usually fixed under the raised floor



Availability of length customisation, isolation type and colour upon request

Energy distribution box

Its role is to centralize the layout of the workplace connections in any office, whether large or small.

3 and 5-pole

The range of distribution boxes has specific references for installations in monophasic lines (3-pole) and triphasic lines (5-pole).

Connectors

It is possible to customise the number of lines, the number of connectors for each line and the shape of the required quick-connect connector (Wieland®, Wago®, etc.).

Tamper-proof

The box is supplied already assembled with tamper-proof screws to guarantee that the product has not been modified, ensuring the connections diagram remains unaltered.

Lifting

The range includes an accessory that allows the distribution box to be raised from the floor slab and allows cables to be distributed in the space provided while, simultaneously, preventing electrical disconnection in the event of contact with liquids due to a possible spillage.

Energy patch cords

Simon 480 furniture solution range are connected through energy patch cords. Their purpose is to connect the distribution box with the workplaces.

According to standard

Suitable for fixed installations according to the IEC 61535:2010 standard.

Visual identification of circuits

The colour of the connector indicates the connection type: black (standard energy line) and red (UPS stabilised energy line).

Suitable for all types of installation

Connector versions with 3 and 5-pole for use in the most common installations.



**HIDDEN
SOLUTIONS**

481 ESSENTIAL

Solutions bringing the maximum capacity in the minimum space. To be hidden in the furniture



Essential kit with 4 regular sockets and V&D angled plate for 2 RJ45 connectors. Electrical connection through quick-connect connector.

Ref. 48110F400K00000-30

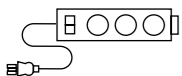




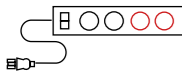





Essential kit with 2 regular sockets, 2 UPS sockets and V&D angled plate for 2 RJ45 connectors. Electrical connection through quick-connect connector.

Electrical connection through quick-connect connector.

Ref. 48120F220K00000-30

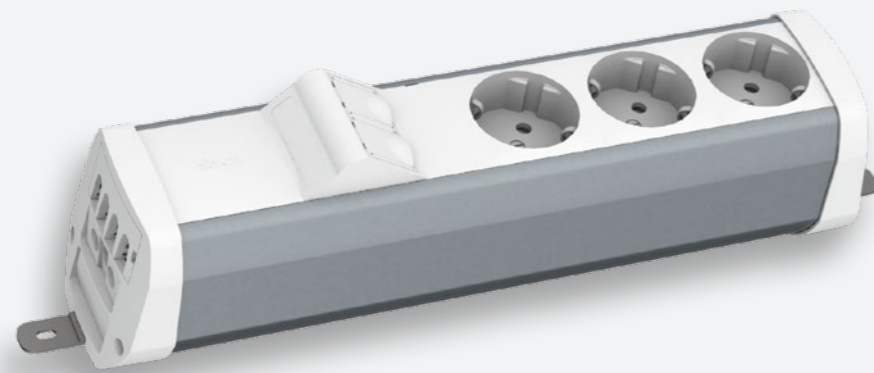
PREDEFINED KITS

ART.NUMBER	FINISHINGS	DESCRIPTION	Socket type
 48110F300K00000	-33 44 -30 -40	3 regular sockets and V&D angled plate for 2 RJ45 keystone/systimax connectors.	 Schuko
48110E300K00000	-33 44 -30 -40	Electrical connection through quick-connect connector with Wieland figure + access for data cable.	 French pin
 48110F400K00000	-33 44 -30 -40	4 regular sockets and V&D angled plate for 2 RJ45 keystone/systimax connectors.	 Schuko
48110E400K00000	-33 44 -30 -40	Electrical connection through quick-connect connector with Wieland figure + access for data cable.	 French pin
 48120F220K00000	-33 44 -30 -40	2 regular sockets, 2 UPS sockets and V&D angled plate for 2 RJ45 keystone/systimax connectors.	 Schuko
48120E220K00000	-33 44 -30 -40	Electrical connection through quick-connect connector with Wieland figure + access for data cable.	 French pin

ART.NUMBER	FINISHINGS	DESCRIPTION	Socket type
 48130F300K00000	-33 44 -30 -40	3 regular sockets and V&D angled plate for 2 RJ45 keystone/systimax connectors.	 Schuko
48130E300K00000	-33 44 -30 -40	Electrical connection through screw-terminal + access for data cable.	 French pin
 48130F400K00000	-33 44 -30 -40	4 regular sockets and V&D angled plate for 2 RJ45 keystone/systimax connectors.	 Schuko
48130E400K00000	-33 44 -30 -40	Electrical connection through screw-terminal + access for data cable.	 French pin
 48130F220K00000	-33 44 -30 -40	2 regular sockets, 2 UPS sockets and V&D angled plate for 2 RJ45 keystone/systimax connectors.	 Schuko
48130E220K00000	-33 44 -30 -40	Electrical connection through screw-terminal + access for data cable.	 French pin

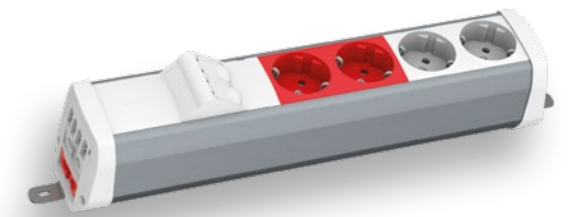
482 DEPTH

The solution when huge internal depth is needed (higher data categories, multimedia connectors with female-female connection...).



Depth kit with 4 regular sockets and V&D angled plate for 2 RJ45 connectors. Electrical connection through quick-connect connector.

Ref. 48210F400K00000-30



Depth kit with 2 regular sockets, 2 UPS sockets and V&D angled plate for 2 RJ45 connectors. Electrical connection through quick-connect connector.

Ref. 48220F220K00000-30

PREDEFINED KITS

	ART. NUMBER	FINISHINGS	DESCRIPTION	Socket type
	48210F300K00000	-33 -44 -30 -40	3 regular sockets and V&D angled plate for 2 RJ45 keystone/systimax connectors.	Schuko
	48210E300K00000	-33 -44 -30 -40	Electrical connection through quick-connect connector with Wieland figure + access for data cable.	French pin
	48210F400K00000	-33 -44 -30 -40	4 regular sockets and V&D angled plate for 2 RJ45 keystone/systimax connectors.	Schuko
	48210E400K00000	-33 -44 -30 -40	Electrical connection through quick-connect connector with Wieland figure + access for data cable.	French pin
	48220F220K00000	-33 -44 -30 -40	2 regular sockets, 2 UPS sockets and V&D angled plate for 2 RJ45 keystone/systimax connectors.	Schuko
	48220E220K00000	-33 -44 -30 -40	Electrical connection through quick-connect connector with Wieland figure + access for data cable.	French pin

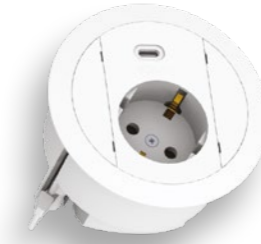
	ART. NUMBER	FINISHINGS	DESCRIPTION	Socket type
	48230F300K00000	-33 -44 -30 -40	3 regular sockets and V&D angled plate for 2 RJ45 keystone/systimax connectors.	Schuko
	48230E300K00000	-33 -44 -30 -40	Electrical connection through screw-terminal + access for data cable.	French pin
	48230F400K00000	-33 -44 -30 -40	4 regular sockets and V&D angled plate for 2 RJ45 keystone/systimax connectors.	Schuko
	48230E400K00000	-33 -44 -30 -40	Electrical connection through screw-terminal + access for data cable.	French pin
	48230F220K00000	-33 -44 -30 -40	2 regular sockets, 2 UPS sockets and V&D angled plate for 2 RJ45 keystone/systimax connectors.	Schuko
	48230E220K00000	-33 -44 -30 -40	Electrical connection through screw-terminal + access for data cable.	French pin



**VISIBLE
SOLUTIONS**

483 ROUND

Single point solution for one user or to be used as a courtesy socket for plugged connections and USB devices



Round kit with 1 regular socket and USB charger type C.
Electrical connection through quick-connect connector.

Ref. 48310F10E000000-33

PREDEFINED KITS

	ART.NUMBER	FINISHINGS	DESCRIPTION	Socket type
	48310F10C000000	-33 -44	Socket + USB charger Type A.	Schuko
	48310E10C000000	-33 -44	Electrical connection through quick- connect connector with Wieland figure.	French pin

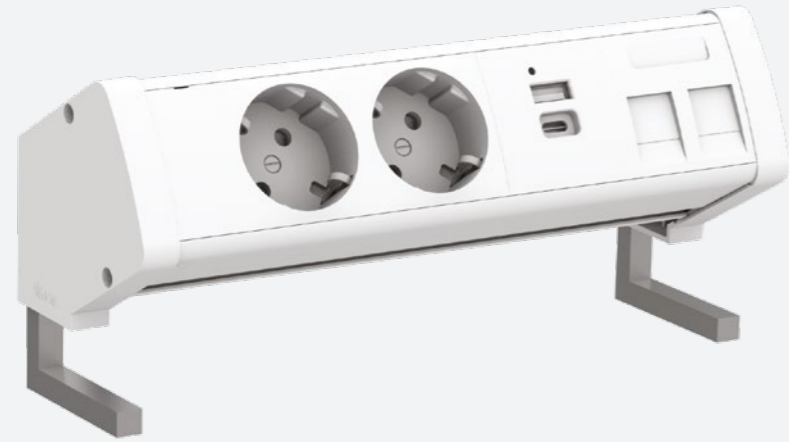
	ART.NUMBER	FINISHINGS	DESCRIPTION	Socket type
	48310F10E000000	-33 -44	Socket + USB charger Type C.	Schuko
	48310E10E000000	-33 -44	Electrical connection through quick- connect connector with Wieland figure.	French pin

	ART.NUMBER	FINISHINGS	DESCRIPTION	Socket type
	48330F10C000000	-33 -44	Socket + USB charger Type A.	Schuko
	48330E10C000000	-33 -44	Electrical connection through 20 cm. free-end cable.	French pin

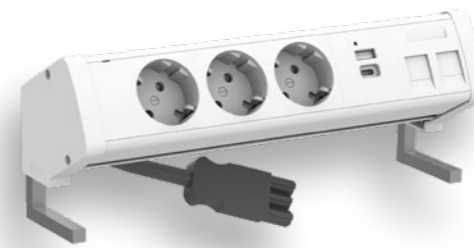
	ART.NUMBER	FINISHINGS	DESCRIPTION	Socket type
	48330F10E000000	-33 -44	Socket + USB charger Type C.	Schuko
	48330E10E000000	-33 -44	Electrical connection through 20 cm. free-end cable.	French pin

484 OVERDESK

High design and practicality for permanent connexions over the desk.



Customisable



Overdesk kit with USB charger Type A+C, 3 regular sockets and V&D flat plate for 2 RJ45 keystone/systemax connectors. Electrical connection through quick-connect connector.

Ref. 48410F30BK00000-33

Overdesk kit with USB charger Type A+C and 2 regular sockets. Electrical connection through quick-connect connector.

Ref. 48410F20B000000-34

PREDEFINED KITS

	ART.NUMBER	FINISHINGS	DESCRIPTION	Socket type
	48410F20B000000	-33 -44 -30 -40	USB charger Type A+C and 2 regular sockets.	Schuko
	48410E20B000000	-33 -44 -30 -40	Electrical connection through quick-connect connector with Wieland figure.	French pin
	48410F300K00000	-33 -44 -30 -40	3 regular sockets and V&D flat plate for 2 RJ45 keystone/systemax connectors.	Schuko
	48410E300K00000	-33 -44 -30 -40	Electrical connection through quick-connect connector with Wieland figure + access for data cable.	French pin
	48410F30BK00000	-33 -44 -30 -40	USB charger Type A+C, 3 regular sockets and V&D flat plate for 2 RJ45 keystone/systemax connectors.	Schuko
	48410E30BK00000	-33 -44 -30 -40	Electrical connection through quick-connect connector with Wieland figure + access for data cable.	French pin

	ART.NUMBER	FINISHINGS	DESCRIPTION	Socket type
	48430F20B000000	-33 -44 -30 -40	USB charger Type A+C and 2 regular sockets.	Schuko
	48430E20B000000	-33 -44 -30 -40	Electrical connection through 20 cm. free-end cable.	French pin
	48430F300K00000	-33 -44 -30 -40	3 regular sockets and V&D flat plate for 2 RJ45 keystone/systemax connectors.	Schuko
	48430E300K00000	-33 -44 -30 -40	Electrical connection through 20 cm. free-end cable + access for data cable.	French pin
	48430F30BK00000	-33 -44 -30 -40	USB charger Type A+C, 3 regular sockets and V&D flat plate for 2 RJ45 keystone/systemax connectors.	Schuko
	48430E30BK00000	-33 -44 -30 -40	Electrical connection through 20 cm. free-end cable + access for data cable.	French pin



SOLUTIONS
FOR MEETING
ROOMS

485 INDESK

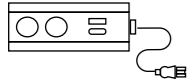


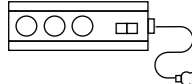


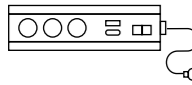


Complete integration in the furniture in meeting rooms or reception desks for non-permanent connectivity

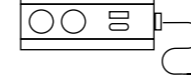





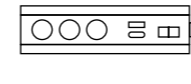




Indesk kit with USB charger Type A+C, 3 regular sockets and V&D flat plate for 2 RJ45 keystone/systemax connectors. Electrical connection through quick-connect connector.

Ref. 48510F30BK00000-33

PREDEFINED KITS

ART.NUMBER	FINISHINGS	DESCRIPTION	Socket type
			
48510F20B000000	-33 44 -30 -40	USB charger Type A+C and 2 regular sockets.	 Schuko
48510E20B000000	-33 44 -30 -40	Electrical connection through quick-connect connector with Wieland figure.	 French pin
			
48510F300K00000	-33 44 -30 -40	3 regular sockets and V&D flat plate for 2 RJ45 keystone/systemax connectors.	 Schuko
48510E300K00000	-33 44 -30 -40	Electrical connection through quick-connect connector with Wieland figure + access for data cable.	 French pin
			
48510F30BK00000	-33 44 -30 -40	USB charger Type A+C, 3 regular sockets and V&D flat plate for 2 RJ45 keystone/systemax connectors.	 Schuko
48510E30BK00000	-33 44 -30 -40	Electrical connection through quick-connect connector with Wieland figure + access for data cable.	 French pin

ART.NUMBER	FINISHINGS	DESCRIPTION	Socket type
			
48530F20B000000	-33 44 -30 -40	USB charger Type A+C and 2 regular sockets.	 Schuko
48530E20B000000	-33 44 -30 -40	Electrical connection through 20 cm. free-end cable.	 French pin
			
48530F300K00000	-33 44 -30 -40	3 regular sockets and V&D flat plate for 2 RJ45 keystone/systemax connectors.	 Schuko
48530E300K00000	-33 44 -30 -40	Electrical connection through 20 cm. free-end cable + access for data cable.	 French pin
			
48530F30BK00000	-33 44 -30 -40	USB charger Type A+C, 3 regular sockets and V&D flat plate for 2 RJ45 keystone/systemax connectors.	 Schuko
48530E30BK00000	-33 44 -30 -40	Electrical connection through 20 cm. free-end cable + access for data cable.	 French pin

486 SPINNER

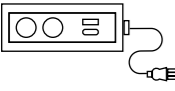


To get the most of the absence of connections when not using them in meeting rooms or reception desks for occasional connectivity

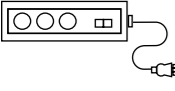




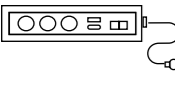


Spinner kit with USB charger Type A+C, 3 regular sockets and V&D flat plate for 2 RJ45 keystone/systimax connectors. Electrical connection through quick-connect connector.




Ref. 48610F30BK00000-33

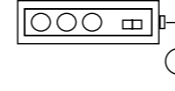


PREDEFINED KITS




ART.NUMBER	FINISHINGS	DESCRIPTION	Socket type
 48610F20B000000	-33 -44	USB charger Type A+C and 2 regular sockets.	 Schuko
48610E20B000000	-33 -44	Electrical connection through quick-connect connector with Wieland figure.	 French pin

ART.NUMBER	FINISHINGS	DESCRIPTION	Socket type
 48610F300K00000	-33 -44	3 regular sockets and V&D flat plate for 2 RJ45 keystone/systimax connectors.	 Schuko
48610E300K00000	-33 -44	Electrical connection through quick-connect connector with Wieland figure + access for data cable.	 French pin

ART.NUMBER	FINISHINGS	DESCRIPTION	Socket type
 48610F30BK00000	-33 -44	USB charger Type A+C, 3 regular sockets and V&D flat plate for 2 RJ45 keystone/systimax connectors.	 Schuko
48610E30BK00000	-33 -44	Electrical connection through quick-connect connector with Wieland figure + access for data cable.	 French pin

ART.NUMBER	FINISHINGS	DESCRIPTION	Socket type
 48630F20B000000	-33 -44	USB charger Type A+C and 2 regular sockets.	 Schuko
48630E20B000000	-33 -44	Electrical connection through 20 cm. free-end cable.	 French pin

ART.NUMBER	FINISHINGS	DESCRIPTION	Socket type
 48630F300K00000	-33 -44	3 regular sockets and V&D flat plate for 2 RJ45 keystone/systimax connectors.	 Schuko
48630E300K00000	-33 -44	Electrical connection through 20 cm. free-end cable + access for data cable.	 French pin

ART.NUMBER	FINISHINGS	DESCRIPTION	Socket type
 48630F30BK00000	-33 -44	USB charger Type A+C, 3 regular sockets and V&D flat plate for 2 RJ45 keystone/systimax connectors.	 Schuko
48630E30BK00000	-33 -44	Electrical connection through 20 cm. free-end cable + access for data cable.	 French pin

487 COVER

Complete integration with the furniture when is not in use thanks to the cover to be used in meeting rooms or reception desks for occasional connectivity



Cover kit with USB charger Type A+C, 3 regular sockets and V&D flat plate for 2 RJ45 keystone/systimax connectors. Electrical connection through quick-connect connector.

Ref. 48710F30BK00000-33

PREDEFINED KITS

ART.NUMBER	FINISHINGS	DESCRIPTION	Socket type
48710F20B000000	-33 -44	USB charger Type A+C and 2 regular sockets.	Schuko
48710E20B000000	-33 -44	Electrical connection through quick-connect connector with Wieland figure.	French pin

ART.NUMBER	FINISHINGS	DESCRIPTION	Socket type
48710F300K00000	-33 -44	3 regular sockets and V&D flat plate for 2 RJ45 keystone/systimax connectors.	Schuko
48710E300K00000	-33 -44	Electrical connection through quick-connect connector with Wieland figure + access for data cable.	French pin

ART.NUMBER	FINISHINGS	DESCRIPTION	Socket type
48710F30BK00000	-33 -44	USB charger Type A+C, 3 regular sockets and V&D flat plate for 2 RJ45 keystone/systimax connectors.	Schuko
48710E30BK00000	-33 -44	Electrical connection through quick-connect connector with Wieland figure + access for data cable.	French pin

ART.NUMBER	FINISHINGS	DESCRIPTION	Socket type
48730F20B000000	-33 -44	USB charger Type A+C and 2 regular sockets.	Schuko
48730E20B000000	-33 -44	Electrical connection through 20 cm. free-end cable.	French pin

ART.NUMBER	FINISHINGS	DESCRIPTION	Socket type
48730F300K00000	-33 -44	3 regular sockets and V&D flat plate for 2 RJ45 keystone/systimax connectors.	Schuko
48730E300K00000	-33 -44	Electrical connection through 20 cm. free-end cable + access for data cable.	French pin

ART.NUMBER	FINISHINGS	DESCRIPTION	Socket type
48730F30BK00000	-33 -44	USB charger Type A+C, 3 regular sockets and V&D flat plate for 2 RJ45 keystone/systimax connectors.	Schuko
48730E30BK00000	-33 -44	Electrical connection through 20 cm. free-end cable + access for data cable.	French pin

FULL CUSTOMIZED

Any kind of combination made up with power outlets, USB chargers, RJ data connectors, data or multimedia connectors. Possibility to protect line set with RCCB or MCCB switches.



Personalize your Simon 480 in just a few steps using the online configurator.

www.s480customisation.com

- 1 - SELECT THE SOLUTION



481 ESSENTIAL



482 DEPTH



484 OVERDESK



485 INDESK



486 SPINNER



487 COVER

- 2 - CABLE FINISHING



Peeled cable



Male wieland type connector



Cable finished with male wieland type connector



Cable finished with a plug



Any kind of cable



Any length of cable

- 3 - POWER OUTLETS

Up to 8 sockets



Schuko type socket



French pin type socket



UPS type socket

- 4 - USB CHARGERS



Basic 2A USB type A



Improved 4.2A double USB type A



Innovative 4,2 A double USB type A+C

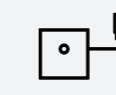
- 5 - DATA MULTIMEDIA



RJ45 plates for single & double connectors



Female-female v1.4 HDMI



Female-female Mini-Jack



Female-female 3.0 USB data



Female-female VGA



Female-welded BNC



Screwed 3RCA connector



Female-female v1.2 Display Port



2xST fiber optics plate



SC Duplex fiber optics plate



SC Simplex / LC Duplex fiber optics plate

- 6 - COLOUR OF THE ENCLOSURE

- 7 - SPECIAL TAYLOR MADE NEEDINGS

Distribution boxes

1 REGULAR 3-POLE CIRCUIT

1 INPUTS 4 OUTPUTS



ART. NO.	DESCRIPTION
49114000-039	1-circuit standard distribution box with 1 x 3-pole input with Wieland® GST18i figure and 4 x 3-pole outputs with Wieland® GST18i figure

1 INPUTS 5 OUTPUTS



ART. NO.	DESCRIPTION
49115000-039	1-circuit standard distribution box with 1 x 3-pole input with Wieland® GST18i figure and 5 x 3-pole outputs with Wieland® GST18i figure

1 INPUTS 6 OUTPUTS



ART. NO.	DESCRIPTION
49116000-039	1-circuit standard distribution box with 1 x 3-pole input with Wieland® GST18i figure and 6 x 3-pole outputs with Wieland® GST18i figure.

1 INPUTS 7 OUTPUTS



ART. NO.	DESCRIPTION
49117000-039	1-circuit standard distribution box with 1 x 3-pole input with Wieland® GST18i figure and 7 x 3-pole outputs with Wieland® GST18i figure.

1 INPUTS 8 OUTPUTS



ART. NO.	DESCRIPTION
49118000-039	1-circuit standard distribution box with 1 x 3-pole input with Wieland® GST18i figure and 8 x 3-pole outputs with Wieland® GST18i figure.

1 INPUTS 9 OUTPUTS



ART. NO.	DESCRIPTION
49119000-039	1-circuit standard distribution box with 1 x 3-pole input with Wieland® GST18i figure and 9 x 3-pole outputs with Wieland® GST18i figure.

1 3-POLE STABILISED (UPS) CIRCUIT

1 INPUTS 5 OUTPUTS



ART. NO.	DESCRIPTION
49120500-039	1-circuit stabilised distribution box (UPS) with 1 x 3-pole input with Wieland® GST18i figure and 5 x 3-pole outputs with Wieland® GST18i figure.

1 INPUTS 7 OUTPUTS



ART. NO.	DESCRIPTION
49120700-039	1-circuit stabilised distribution box (UPS) with 1 x 3-pole input with Wieland® GST18i figure and 7 x 3-pole outputs with Wieland® GST18i figure.

1 REGULAR CIRCUIT AND 1 X 3-POLE STABILISED CIRCUIT (UPS)

2 INPUTS; 3 STANDARD OUTPUTS + 3 UPS OUTPUTS



ART. NO.	DESCRIPTION
49133300-039	2-circuit distribution box with 1 x 3-pole input with Wieland® GST18i figure and 3 x 3-pole outputs for standard circuit and 1 x 3-pole input with Wieland® GST18i figure and 3 x 3-pole outputs with Wieland® GST18i figure for stabilised circuit (UPS)

2 INPUTS; 4 STANDARD OUTPUTS + 4 UPS OUTPUTS



ART. NO.	DESCRIPTION
49134400-039	2-circuit distribution box with 1 x 3-pole input with Wieland® GST18i figure and 4 x 3-pole outputs for standard circuit and 1 x 3-pole input with Wieland® GST18i figure and 4 x 3-pole outputs with Wieland® GST18i figure for stabilised circuit (UPS)

1 REGULAR 5-POLE CIRCUIT

1 5-POLE INPUT; 3 STANDARD 3-POLE OUTPUTS + 1 5-POLE OUTPUT



ART. NO.	DESCRIPTION
49143010-039	1-circuit standard distribution box with 1 x 5-pole input with Wieland® GST18i figure and 3 x 3-pole outputs and 1 x 5-pole output with Wieland® GST18i figure



1 X 5-POLE INPUT; 6 STANDARD 3-POLE OUTPUTS + 1 X 5-POLE OUTPUT





ART. NO.	DESCRIPTION
49146010-039	1-circuit standard distribution box with 1 x 5-pole input with Wieland® GST18i figure and 6 x 3-pole outputs and 1 x 5-pole output with Wieland® GST18i figure


Patch cords

3-POLE QUICK-CONNECTION PATCH CORDS


ART. NO.	FINISH	DESCRIPTION
 CR1020	/9	Female 3-pole German socket outlet quick-connection patch cords. 2 metres. PVC Section 3x1.5 mm ²
 CR6020	/9 /14 /6	Female 3-pole German socket outlet quick-connection patch cords. 2 metres. RZ cable - 0.6/1kv. Halogen-free. Section 3x2.5 mm ²
 CR4020	/9 /14 /6	Female 3-pole free end quick-connection patch cords. 2 metres. RZ cable - 0.6/1kv. Halogen-free. Section 3x2.5 mm ²
 CR2010	/9 /14 /6	Male-female 3-pole quick-connection patch cords. 1 metre. RZ cable - 0.6/1kv. Halogen-free. Section 3x2.5 mm ²
 CR2020	/9 /14 /6	Male-female 3-pole quick-connection patch cords. 2 metres. RZ cable - 0.6/1kv. Halogen-free. Section 3x2.5 mm ²
 CR2030	/9 /14 /6	Male-female 3-pole quick-connection patch cords. 3 metres. RZ cable - 0.6/1kv. Halogen-free. Section 3x2.5 mm ²

ART. NO.	FINISH	DESCRIPTION
 CR2040	/9 /14 /6	Male-female 3-pole quick-connection patch cords. 4 metres. RZ cable - 0.6/1kv. Halogen-free. Section 3x2.5 mm ²
 CR2050	/9 /14 /6	Male-female 3-pole quick-connection patch cords. 5 metres. RZ cable - 0.6/1kv. Halogen-free. Section 3x2.5 mm ²

ARTICULATED CABLE MANAGER

ART. NO.	FINISH	DESCRIPTION
 49204004	-030 -038	Kit consisting of articulated cable manager for 4 workplaces





GROMMET FOR RAISED FLOOR OR FURNITURE (Ø102 MM)

ART. NO.	FINISH	DESCRIPTION
 52055000	-030 -038 -033	Allows cables to pass from the raised floor to the surface. When closed, dust and other elements cannot enter.



Connectors



QUICK-CONNECTION CONNECTORS FOR CREATING PATCH CORDS OF CUSTOMISED LENGTH

3-POLE CONNECTORS


ART. NO.	FINISH	DESCRIPTION
 CR0001	/9 /14 /6	Female 3-pole recessed quick connector. Clamp connection.
 CR0002	/9 /14 /6	Male 3-pole recessed quick connector. Clamp connection.
 CR0003	/9 /14 /6	Female 3-pole overhead quick connector. Screw connection
 CR0004	/9 /14 /6	Male 3-pole overhead quick connector. Screw connection

5-POLE CONNECTORS

ART. NO.	FINISH	DESCRIPTION
 CR5001	/14	Female 5-pole recessed quick connector. Clamp connection.
 CR5002	/9 /14 /6	Male 5-pole recessed quick connector. Clamp connection.

ART. NO.	FINISH	DESCRIPTION
 CR5003	/9 /14 /6	Female 5-pole overhead quick connector. Screw connection
 CR5004	/9 /14 /6	Male 5-pole overhead quick connector. Screw connection

DISTRIBUTORS

ART. NO.	FINISH	DESCRIPTION
 CR7312	/14	3-pole T-piece with 1 male inlet and 2 female outlets

Simon|480

FINISHES

UP TO 4 DIFFERENT
COLOUR COMBINATIONS *



Aluminium profile with
anodised finishing with
functions in white
Ref. 48120F220K00000-30



Aluminium profile with
anodised finishing with
functions in black
Ref. 48120F220K00000-40




Profile and function
finishing in white
Ref. 48120F220K00000-33



Profile and function
finishing in black
Ref. 48120F220K00000-44



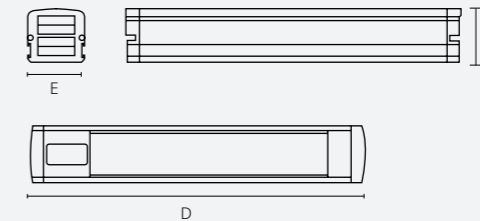
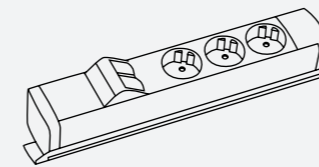
 Customisable

Possibility of supply on
request profile, enclosure
and functions in different
combinations or other
finishings. please get in
touch with your simon
sales agent.

* The amount of different finishings may vary in each range

HIDDEN SOLUTIONS

481 ESSENTIAL



(D, E, F) MM

(183, 55, 52)

(228, 55, 52)

(273, 55, 52)

(318, 55, 52)

(363, 55, 52)

(408, 55, 52)

(453, 55, 52)

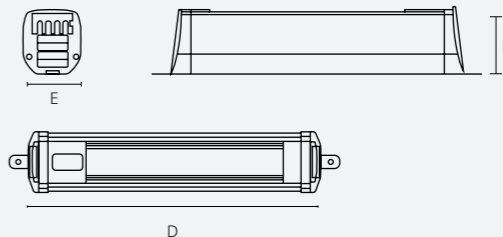
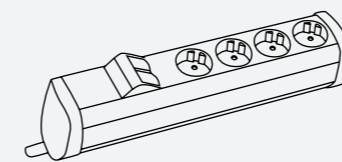
(498, 55, 52)



Installation: Desk

Raw materials: Halogen free
polycarbonate, Anodised
aluminium

482 DEPTH



(D, E, F) MM

(201, 68, 73)

(246, 68, 73)

(291, 68, 73)

(336, 68, 73)

(381, 68, 73)

(426, 68, 73)

(471, 68, 73)

(516, 68, 73)



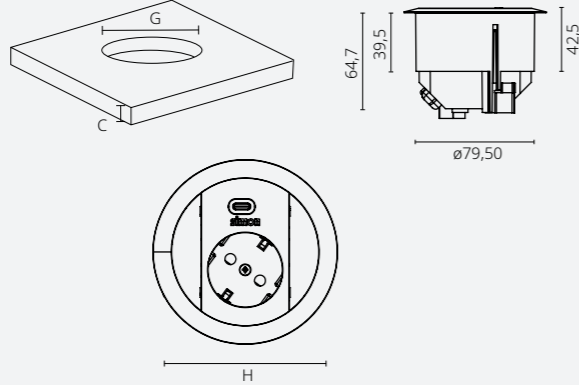
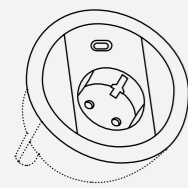
Installation: Desk

Raw materials: Halogen free
polycarbonate, Anodised
aluminium

VISIBLE SOLUTIONS

483 ROUND

(C, G Ø, H Ø) MM
(12-45, 80-90, 95)



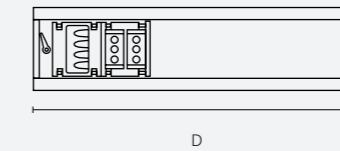
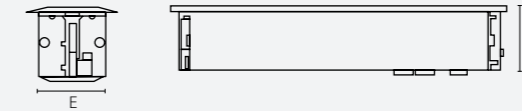
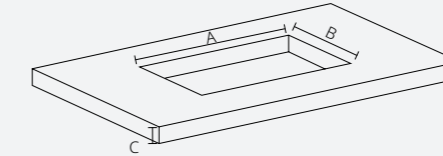
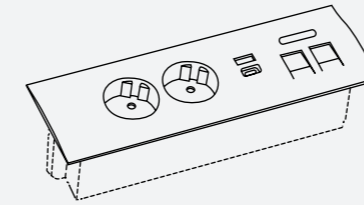
Installation: Desk

Raw materials: Halogen free polycarbonate, Anodised aluminium

SOLUTIONS FOR MEETING ROOMS

485 INDESK

(A, B, C)	(D, E, F) MM
(116, 56, 9-35)	(124, 55, 58)
(161, 56, 9-35)	(169, 55, 58)
(206, 56, 9-35)	(214, 55, 58)
(251, 56, 9-35)	(259, 55, 58)
(296, 56, 9-35)	(304, 55, 58)
(341, 56, 9-35)	(349, 55, 58)
(386, 56, 9-35)	(394, 55, 58)
(431, 56, 9-35)	(439, 55, 58)

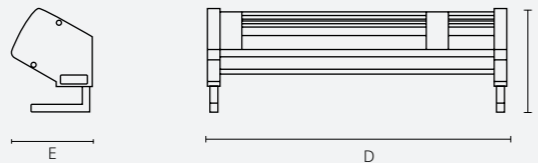
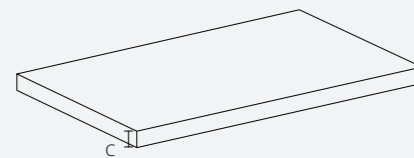
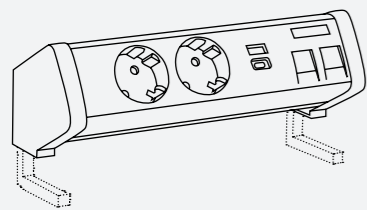


Installation: Desk

Raw materials: Halogen free polycarbonate, Anodised aluminium

484 OVERDESK

(C, D, E, F) MM
(19-60, 114, 79, 79)
(19-60, 159, 79, 79)
(19-60, 204, 79, 79)
(19-60, 249, 79, 79)
(19-60, 294, 79, 79)
(19-60, 339, 79, 79)
(19-60, 384, 79, 79)
(19-60, 429, 79, 79)

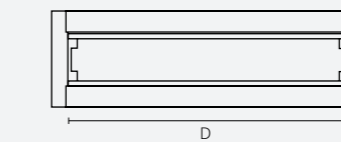
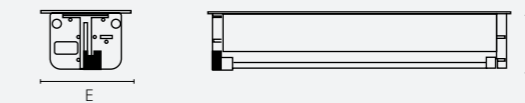
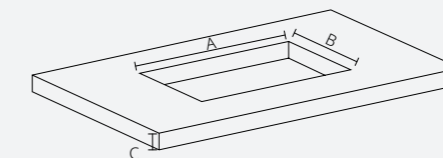
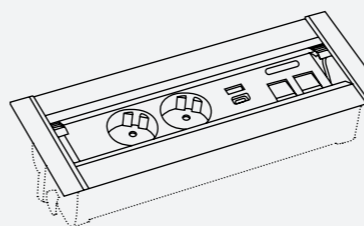


Installation: Desk

Raw materials: Halogen free polycarbonate, Anodised aluminium

486 SPINNER

(A, B, C)	(D, E, F) MM
(147, 81, 10-40)	(155, 100, 65)
(192, 81, 10-40)	(200, 100, 65)
(237, 81, 10-40)	(245, 100, 65)
(282, 81, 10-40)	(290, 100, 65)
(327, 81, 10-40)	(335, 100, 65)
(372, 81, 10-40)	(380, 100, 65)
(417, 81, 10-40)	(425, 100, 65)
(462, 81, 10-40)	(470, 100, 65)

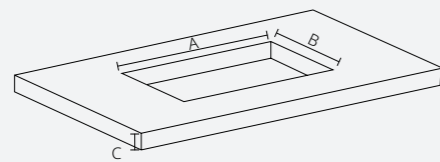
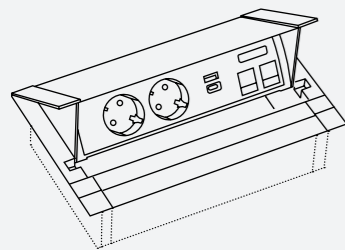


Installation: Desk

Raw materials: Halogen free polycarbonate, Anodised aluminium

SOLUTIONS FOR MEETING ROOMS

487 COVER

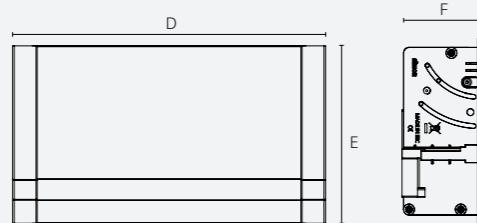


(A, B, C)	(D, E, F) MM
(135, 145, 15-28)	(144, 159, 68)
(180, 145, 15-28)	(189, 159, 68)
(225, 145, 15-28)	(234, 159, 68)
(270, 145, 15-28)	(279, 159, 68)
(315, 145, 15-28)	(324, 159, 68)
(360, 145, 15-28)	(369, 159, 68)
(405, 145, 15-28)	(414, 159, 68)
(450, 145, 15-28)	(459, 159, 68)



Installation: Desk

Raw materials: Halogen free polycarbonate, Anodised aluminium



Power distribution boxes

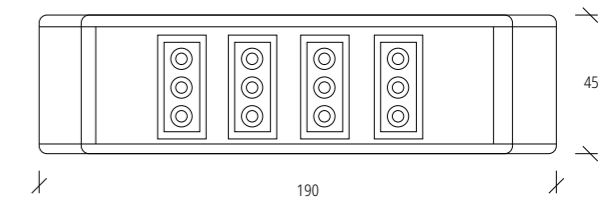
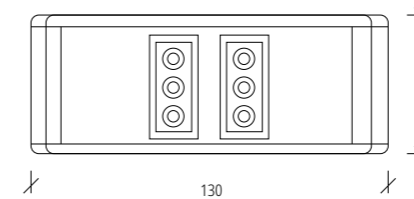
DISTRIBUTION BOXES

- Product designed in compliance with the safety requirements stipulated by Directive 2006/95/EC (Low Voltage) via the UNE-20451:1197 standard and IEC 61535:2010 standard
- 2011/65/EU - RoHS Directive.
- Marked product
- Temperature range during installation: -5 °C to +60 °C
- IP protection level: 4X (with patch cords connected) 2X (without patch cords connected)
- Max. temperature during construction work: +60 °C
- Insulation resistance >5 MΩ to 500 V
- Dielectric strength: No holes or contours, with 2000 V at 50 Hz for 1 minute.
- Self-extinguishing and halogen-free plastic components made of thermoplastic materials, which ensure zero flame propagation in case of fire and low toxicity in case of smoke emission.

RANGE

ART. NO.	3 POLES		5 POLES	
	1 CIRCUIT	2 CIRCUITS	1 CIRCUIT	2 CIRCUITS
1 INPUT AND 3 OUTPUTS		49133300-039	49143010-039	
1 INPUT AND 4 OUTPUTS	49114000-039	49134400-039		
1 INPUT AND 5 OUTPUTS	49115000-039 49120500-039			
1 INPUT AND 6 OUTPUTS	49116000-039		49146010-039	
1 INPUT AND 7 OUTPUTS	49117000-039 49120700-039			
1 INPUT AND 8 OUTPUTS	49118000-039			
1 INPUT AND 9 OUTPUTS	49119000-039			

DIMENSIONS: 190 MM X 130 MM X 45 MM



Quick-connection system

QUICK-CONNECTION SYSTEM

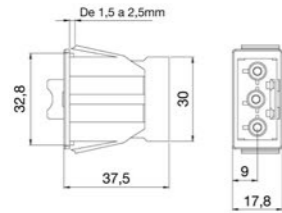
- Product designed in compliance with the safety requirements stipulated by Directive 2006/95/EC (Low Voltage) via the harmonised UNE-EN-50.085 standard.
- Marked product **CE**
- Cable cross-section: 1.5 or 2.5 mm²
- Supports rigid or flexible cable

3-POLE

RECESSED INSTALLATIONS

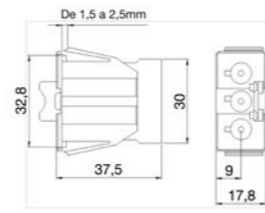
ART. NO.

CR0001/..



ART. NO.

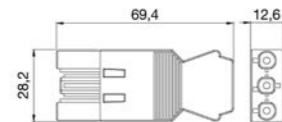
CR0002/..



OVERHEAD CONNECTORS

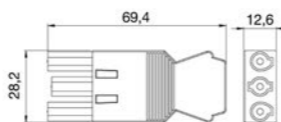
ART. NO.

CR0003/..



ART. NO.

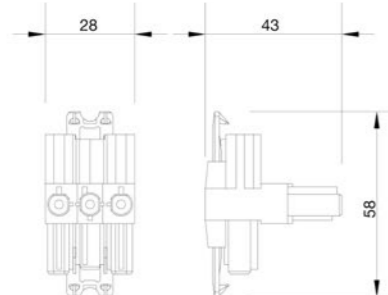
CR0004/..



DISTRIBUTORS

ART. NO.

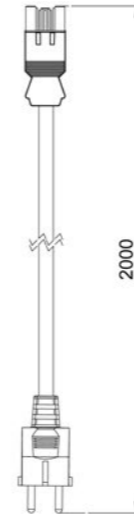
CR7312/14



QUICK-CONNECTION PATCH CORDS

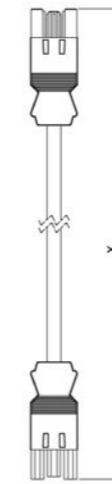
ART. NO.

CRX020/..



ART. NO.

CR20X0/..



ART. NO.

CR4020/..



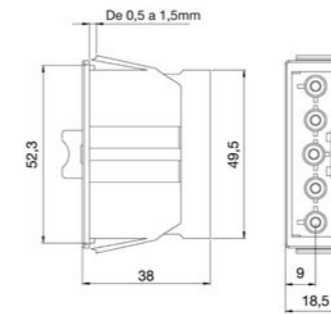
ART. NO.	LENGTH (X) (M)
CR2010/..	1
CR2020/..	2
CR2030/..	3
CR2040/..	4
CR2050/..	5
CR2060/..	6
CR2070/..	7
CR2080/..	8

5-POLE

RECESSED INSTALLATIONS

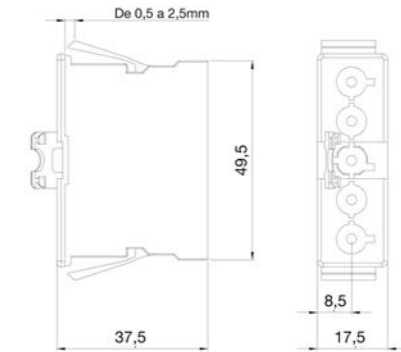
ART. NO.

CR5001/14



ART. NO.

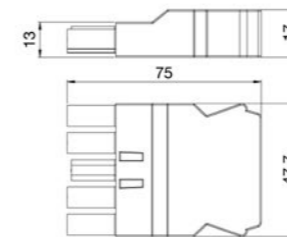
CR5002/14



OVERHEAD CONNECTORS

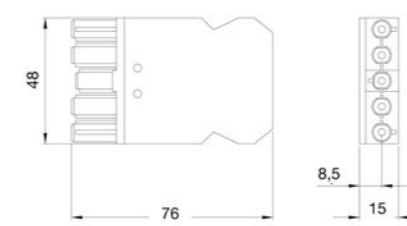
ART. NO.

CR5004/14



ART. NO.

CR5003/14





www.simonelectric.com



SIMON HOLDING

Diputación, 390-392
08013 Barcelona
Tel. +34 651 761 336

Technical Customer Service

Tel. +34 651 761 346
E-mail: sat@simon.es

Projects Departament

Tel. +34 651 761 346
E-mail: proyectos@simon.es

Visit us at:

La Casa de La Luz
Santa Cruz de Marcenado, 1
28015 Madrid

By appointment:
lacadelaluz@simonelectric.com